

# CURRENT TRANSDUCERS

## AC CURRENT TRANSFORMER/TRANSDUCER MODELS H221, H321, H421

### FEATURES

- The H221/321/421 analog current sensors provide reliable load trending information for large motor loads (up to 2400A) with a proportional 4-20mA signal.
- Each sensor can be calibrated for maximum resolution using the span potentiometer.
- Split-Core design is ideal for load trending.

ORDERING INFORMATION		
CATALOG NUMBER	ADJUSTABLE F.S. AC INPUT AMPERES	DC OUTPUTS
H221	100-300A	4-20mA
H321	300-800A	4-20mA
H421*	1000-2400A	4-20mA

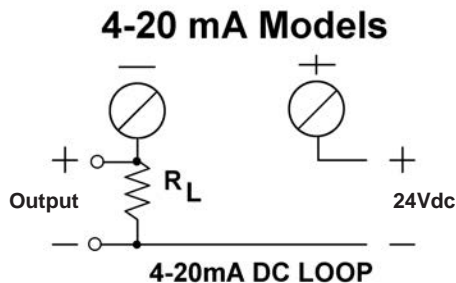
\*H421 is not UL Listed

### SPECIFICATIONS

#### ADJUSTABLE FULL SCALE AMPERAGE RATING

Model 221 .....	100-300A
Model 321 .....	300-800A
Model 421 .....	1000-2400A
Sensor Supply Voltage .....	12 to 30Vdc
Sensor Supply Current .....	30mA max.
Isolation .....	600Vac RMS
Frequency Range .....	50/60Hz nominal
Accuracy ... ± 2% F.S. from 10% to 100% selected range	
Temperature Range .....	-15°C to +60°C
Humidity Range .....	0-95% non-condensing
Response Time .....	2 sec.
Optional Accessories	
TMP15124C .....	24Vdc Power Supply
CT Bracket .....	P/N AH06
Max Terminal Block Wire Size .....	12 AWG

### CONNECTIONS



Model H421

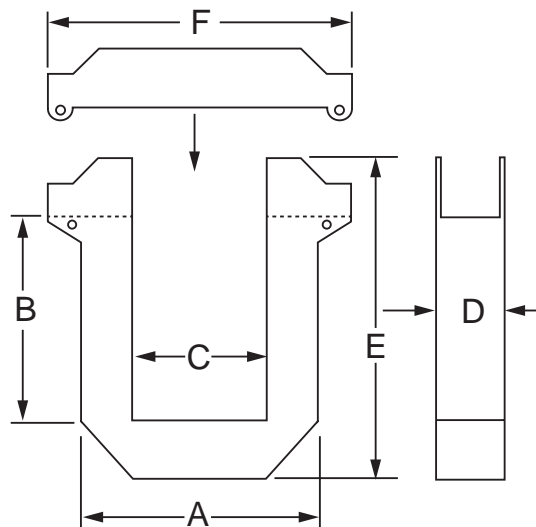


Model H221

Model H321



### DIMENSIONS



	H221		H321		H421
A	3.70"	A	4.90"	A	4.90"
B	1.60"	B	2.90"	B	5.50"
C	1.40"	C	2.50"	C	2.50"
D	1.10"	D	1.20"	D	1.10"
E	4.20"	E	5.5"	E	8.10"
F	4.75"	F	6.00"	F	6.00"
WT.	1.0 Lbs.	WT.	1.5 Lbs.	WT.	2.0 Lbs.

All Dimensions In Inches

**FLEX-CORE®**

Div. Morlan & Associates, Inc.

4970 Scioto Darby Rd. Hilliard, Ohio 43026

[WWW.FLEX-CORE.COM](http://WWW.FLEX-CORE.COM)

[sales@flex-core.com](mailto:sales@flex-core.com)

PHONE (614) 889-6152

TECH. ASSISTANCE (614) 876-8308

FAX # (614) 876-8538