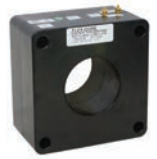


# CURRENT TRANSFORMERS

## RELAY/METER CLASS CURRENT TRANSFORMER MODEL 114

### FEATURES

- UL Recognized
- Window I.D. - 3.25"
- Relaying and Metering Applications



### 600V CLASS

MADE IN U.S.A.

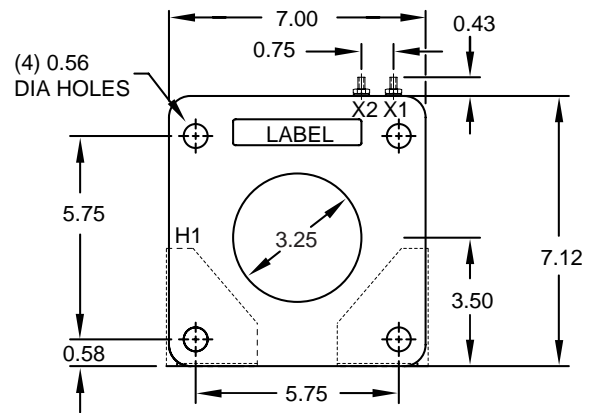
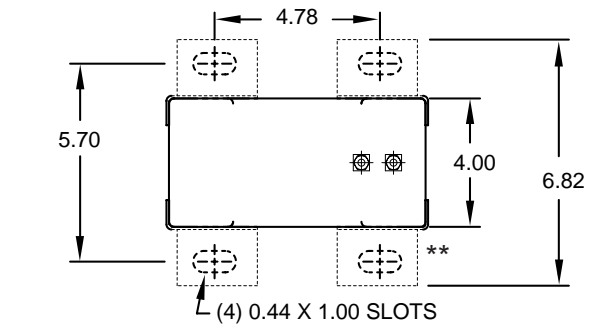


### SPECIFICATIONS

Frequency..... 50-400Hz  
 Insulation Class ..... 0.6kV, 10kV BIL Full Wave  
 Terminals ..... Brass Studs No. 8-32 UNC  
 with one flat washer, lock washer and regular nut.  
 Weight ..... Approximately 22 Lbs.  
 Mounting Bracket..... P/N 0221B01525  
 Manufactured to meet the requirements of ANSI/IEEE C57.13

APPLICATION AND ORDERING DATA										
CATALOG NUMBER	CURRENT RATIO	RELAY CLASS	ANSI METERING CLASS AT 60Hz					SECONDARY WINDING RESISTANCE (Ω @ 75°C)	CONTINUOUS THERMAL RATING FACTOR	
			B0.1	B0.2	B0.5	B0.9	B1.8		@30°C	@55°C
114-500	50:5	C10	1.2	4.8	-	-	-	0.025	2.0	2.0
114-750	75:5	C10	1.2	1.2	4.8	-	-	0.046	2.0	2.0
114-101	100:5	C10	1.2	1.2	2.4	4.8	-	0.062	2.0	2.0
114-151	150:5	C20	0.6	0.6	1.2	2.4	4.8	0.093	2.0	2.0
114-201	200:5	C20	0.3	0.3	0.6	1.2	2.4	0.113	2.0	2.0
114-251	250:5	C50	0.3	0.3	0.6	1.2	1.2	0.155	2.0	2.0
114-301	300:5	C50	0.3	0.3	0.6	0.6	1.2	0.186	2.0	2.0
114-401	400:5	C50	0.3	0.3	0.3	0.3	0.6	0.248	2.0	1.5
114-501	500:5	C100	0.3	0.3	0.3	0.3	0.6	0.309	2.0	1.5
114-601	600:5	C100	0.3	0.3	0.3	0.3	0.3	0.371	1.5	1.33
114-751	750:5	C100	0.3	0.3	0.3	0.3	0.3	0.464	1.5	1.0
114-801	800:5	C100	0.3	0.3	0.3	0.3	0.3	0.495	1.5	1.0
114-102	1000:5	C100	0.3	0.3	0.3	0.3	0.3	0.597	1.5	1.0
114-122	1200:5	C200	0.3	0.3	0.3	0.3	0.3	0.716	1.33	1.0
114-152	1500:5	C200	0.3	0.3	0.3	0.3	0.3	0.896	1.0	0.8
114-162	1600:5	C200	0.3	0.3	0.3	0.3	0.3	0.955	1.0	0.8

### DIMENSIONS



\*\* Shown with optional mounting brackets: P/N #0221B00525  
 All Dimensions In Inches

### EXCITATION CURVE

