

CURRENT TRANSDUCERS

DC CURRENT TRANSDUCER

MODEL DT

DESCRIPTION

DT Series Current Transducers combine a Hall effect sensor and signal conditioner into a single package for use in DC current applications up to 200A. The DT unipolar models have jumper selectable current input ranges and industry standard 4-20mA, 0-5Vdc or 0-10Vdc outputs. Available in split core or solid core enclosures.

DT Bidirectional Output models produce a + 10Vdc signal with current through the aperture in one direction and -10Vdc with current passing in the reverse direction. Split core enclosures only.

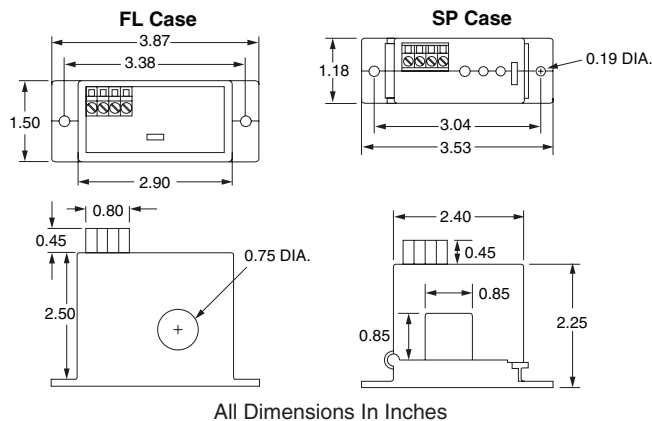
APPLICATIONS

- Solar combiner boxes
- Transportation
- Battery Banks
- Electric heating elements

SPECIFICATIONS

Output Signal.....	4-20mA, 0-5Vdc, 0-10Vdc ±10Vdc (Bidirectional models only)
Output Limit.....	4-20mA: 23mA 0-5Vdc: 5.75Vdc 0-10Vdc: 11.5Vdc
Accuracy.....	Solid-core 1% F.S. Split-core 2% F.S.
Repeatability.....	1.0% F.S.
Response Time.....	Solid Core: 20ms (to 90% of step change) Split Core: 100ms (to 90% of step change)
Frequency Range.....	DC
Power Supply.....	24Vac/dc, 2VA max.
Power Consumption.....	2VA
Loading.....	4-20mA: 500max. 0-5Vdc: 25KΩ min. 0-10Vdc: 50KΩ min.
Isolation Voltage.....	3kV (monitored line to output)
Linearity.....	0.75% F.S.
Current Ranges.....	Field Selectable Ranges from 0-200A Factory Set Ranges from 0-200A (Bidirectional models only)
Sensing Aperture.....	FL Case: 0.75" (19.1mm) dia. SP Case: 0.85" (21.6mm) sq.
Case.....	UL94 V0 Flammability Rated
Environmental.....	-4°F to +122°F (-20°C to +50°C), 0-95% RH, non-condensing
Weight.....	5.5 oz.

DIMENSIONS



ORDERING INFORMATION

DT SERIES UNIPOLAR OUTPUT MODELS

Example: DT2-420-24U-U-SP
Split Core DC current transducer, 0-100/150/200A range, 24Vac/DC powered, 4-20mA unipolar output.

(1) Full Scale Range		(2) Output Signal	
0	5, 10, 20A*	420	4-20mA
1	50, 75, 100A	005	0-5Vdc
2	100, 150, 200A	010	10Vdc

(3) Power Supply	(4) Output Polarity	(5) Case Style			
24U	+24Vac/DC	U	Unipolar	FL	Solid core
				SP	Split core

*DT0 models FL case only.

ORDERING INFORMATION

DT SERIES BIDIRECTIONAL OUTPUT MODELS

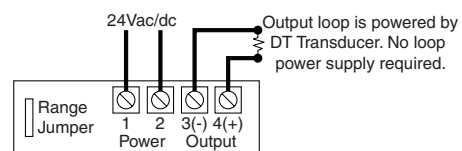
Example: DT2-010-24U-BD-SP
Split core DC current transducer, 0-200A range, 24Vac/DC powered, ±10Vdc bidirectional output

(1) Full Scale Range		(2) Output Signal	
1	100A	010	±10Vdc
2	200A		

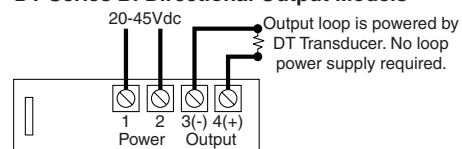
(3) Power Supply	(4) Output Polarity	(5) Case Style			
24D	24Vdc	BD	Bidirectional	SP	Split core

CONNECTIONS

DT Series Unipolar Output Models



DT Series Bi Directional Output Models



FLEX-CORE®
Div. Morlan & Associates, Inc.
4970 Scioto Darby Rd. Hilliard, Ohio 43026

WWW.FLEX-CORE.COM
sales@flex-core.com

PHONE (614) 889-6152
TECH. ASSISTANCE (614) 876-8308
FAX # (614) 876-8538